



#0005003403

Wohnerlebnis Untere Teichstraße! Exklusive Doppelhaushälfte am Fuße des Ruckerlbergs

8010 Graz



Purchase price: 663.800,00 €

Living Area: 89,37 m²

Rooms: 4

YOUR CUSTODIAN



Thomas Kormann
Immobilienfachberatung
Raiffeisen Steiermark
thomas.kormann@rlbstmk.at
+43 664 313 27 90
+43 316 8036 - 2597





DESCRIPTION

Gerade in Zeiten wie diesen bieten die Geborgenheit der eigenen vier Wände und die ermunternde Gewissheit eines sorglosen Rückzugs in den eigenen Garten eine kostbare Lebensperspektive. Wohnobjekte, die diesen Anforderungen genügen und darüber hinaus ökologisch wie ökonomisch nachhaltig errichtet werden, sind mittlerweile sehr selten geworden!

Soeben fertig gestellte Doppelhaushälfte Top 3

Wohnungsgröße: ca. 89,37 m², 4 Zimmer

Eigengärten: 47,20 m²

Kaufpreis: EUR 663.800,00 (Endverbraucher)

Tiefgarage: EUR 26.000,00 (Endverbraucher)



FITTINGS AND PROPERTIES

PROPERTIES



Category	Maisonette
Usage Type	Living
Sales Type	Buy
Form of ownership	Condominium
Year of construction	2024
Construction status	Finished
Heating	Central Heating: Geothermal Energy
Car Spaces	Underground Garage (optional)

AREAS

Living Area	89,37 sqm
Cellar Area	12,87 sqm
Balcony Area	31,35 sqm
Terrace Area	23,37 sqm
Garden Area	47,20 sqm

ENERGY CERTIFICATE

Available

HWB-Value (KWh/m ² /a)	36,00
HWB Class	 B
fGEE Value	0,64
fGEE Class	 A+

SEGMENTATION

Total Rooms	4
Floors	2
Bathrooms	1
Toilets	2
Bedrooms	3
Terraces	1
Balconies	1

FEATURES

Construction	Massive Construction	Age	New Building
--------------	----------------------	-----	--------------



Condition

First Use





PRICES AND FINANCIAL INFORMATION

BASE PRICES

Unit Buy Price	663.800,00 € incl. VAT
----------------	------------------------

RUNNING COSTS

Running costs	206,36 € incl. 10% VAT
---------------	------------------------

Repair Costs	18,76 € incl. VAT
--------------	-------------------

Heating Costs	65,78 € incl. 20% VAT
---------------	-----------------------

TOTAL

Total Running Costs	290,90 € incl. VAT
---------------------	--------------------

Total buy price	663.800,00 € incl. VAT
-----------------	------------------------

Commission Buy	Without commission
----------------	--------------------

SIDECOSTS

Purchase tax percent	3,5%
----------------------	------

Land register entry percent	1,1%
-----------------------------	------



INFRASTRUCTURE AND SURROUNDING

INFRASTRUCTURE

Gastronomy

< 1km: Casa Rustica

Public Institution

< 1km: Graz Waltendorfer Hauptstraße

Health

< 1km: Rothlauer-Apotheke

Shopping

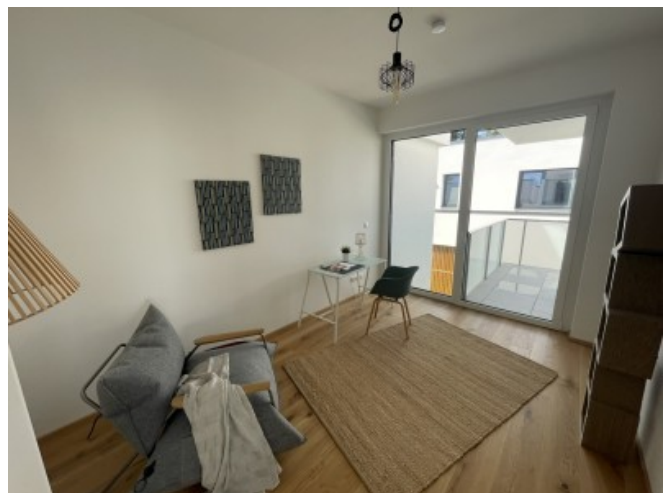
< 1km: Bäckerei Sorger

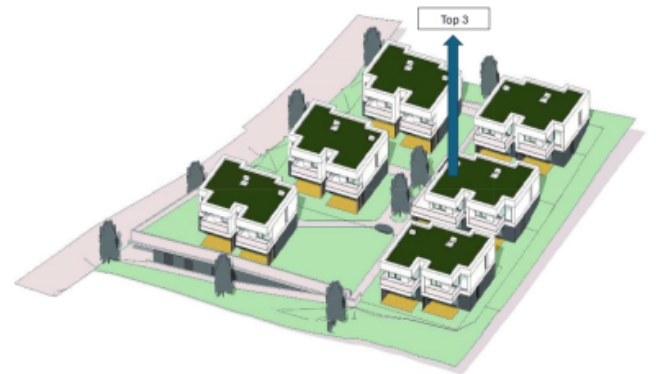
< 1km: Sofisch - Waltendorf

< 1km: Martin Auer



GALLERY





LINKS AND DOWNLOADS





[More information](#)

[Bau- und Ausstattungsbeschreibung](#)

[Top 3 EG](#)

[Top 3 1. OG](#)

