



#0001008938

Einfamilienhaus - Naturparadies mit Schwimmteich und vier Schlafzimmern!

2542 Kottlingbrunn



Purchase price: 849.000,00 €

Living Area: 145,00 m²

Rooms: 5

YOUR CUSTODIAN



Bernhard Wiesner

Immobilienmakler

Raiffeisen Immobilien Vermittlung

bernhard.wiesner@riv.at

+43 664 60 517 517 65





DESCRIPTION

Ein Naturparadies!

Großes Einfamilienhaus mit perfekter Raumaufteilung , Schwimmteich, zwei KFZ-Freiplätzen, einem Garagenplatz und vielem mehr.

Eckdaten:

2 Ebenen

6,5 KW/p Photovoltaik Anlage

4 Schlafzimmer

großer Wohn-Essbereich

Badezimmer mit Eckbadewanne und Dusche und WC

Gäste WC

Küche mit Siemens Elektrogeräten

Speis

kontrollierte Wohnraumbelüftung

Alarmanlage

automatische Gartenbewässerung

Einkaufsmöglichkeit zu Fuß erreichbar

Energieausweis in Bearbeitung.

Neugierig geworden?

Dann fordern Sie gleich das unverbindliche Exposé zu diesem schönen Einfamilienhaus an, um noch weitere Details zu erfahren.



FITTINGS AND PROPERTIES

PROPERTIES



| | |
|----------------------|-----------------------------------|
| Category | Detached House |
| Usage Type | Living |
| Sales Type | Buy |
| Form of ownership | Sole ownership |
| Year of construction | 2013 |
| Heating | Central Heating: Air Heat Pump |
| Car Spaces | 2 x Open, Garage |

AREAS

| | |
|-------------|-------------|
| Living Area | ca. 145 sqm |
| Total Area | ca. 744 sqm |

ENERGY CERTIFICATE

Available

| | |
|-----------------------------------|---|
| Energy Certificate Date | 12.07.2024 |
| Valid until | 11.07.2034 |
| HWB-Value (KWh/m ² /a) | 37,30 |
| HWB Class |  B |
| fGEE Value | 0,75 |
| fGEE Class |  A |

SEGMENTATION

| | |
|-------------|---|
| Total Rooms | 5 |
| Floors | 2 |
| Bathrooms | 1 |
| Toilets | 2 |
| Bedrooms | 4 |
| Terraces | 1 |



PRICES AND FINANCIAL INFORMATION

BASE PRICES

| | |
|----------------|------------------------|
| Unit Buy Price | 849.000,00 € incl. VAT |
|----------------|------------------------|

RUNNING COSTS

| | |
|---------------|------------------------|
| Running costs | 100,10 € incl. 10% VAT |
|---------------|------------------------|

TOTAL

| | |
|---------------------|--------------------|
| Total Running Costs | 100,10 € incl. VAT |
|---------------------|--------------------|

| | |
|-----------------|------------------------|
| Total buy price | 849.000,00 € incl. VAT |
|-----------------|------------------------|

| | |
|----------------|-----------------|
| Commission Buy | 3% plus 20% VAT |
|----------------|-----------------|

SIDECOSTS

| | |
|----------------------|------|
| Purchase tax percent | 3,5% |
|----------------------|------|

| | |
|-----------------------------|------|
| Land register entry percent | 1,1% |
|-----------------------------|------|



INFRASTRUCTURE AND SURROUNDING

INFRASTRUCTURE

Gastronomy

- < 1km: Gasthaus Zum Sandwirt
- < 1km: BP
- < 1km: Weinbau Mehlstaub
- < 1km: Buschenschank Mehlstaub
- < 1km: McCafé

Shopping

- < 1km: Hofer
- < 1km: Libro
- < 1km: Confiserie Heindl Leobersdorf
- < 1km: dm-drogeriemarkt
- Einkaufspark Leo
- Blumen B&b

Other

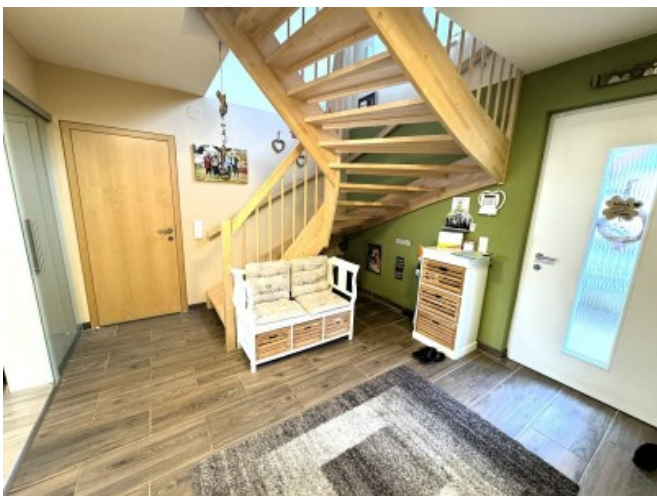
- < 1km: DAC Automobile

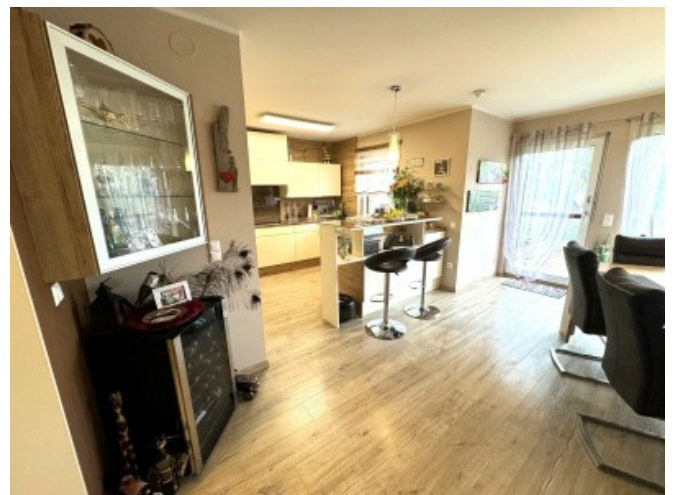
Recreation

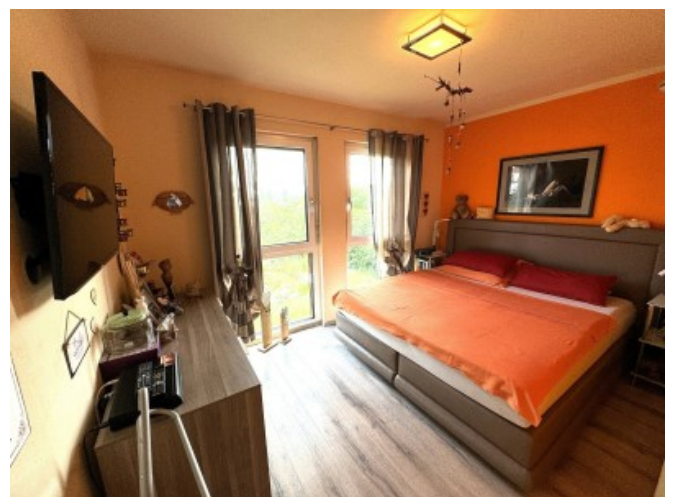
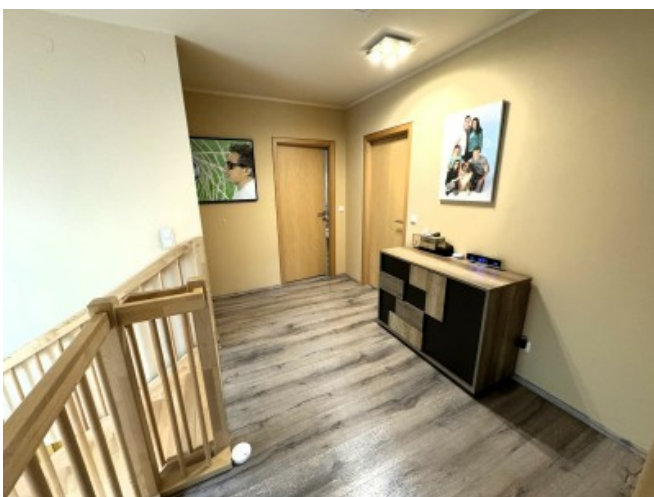
- < 1km: Erlebnis Freibad Leobersdorf
- Sabanovic Sandra

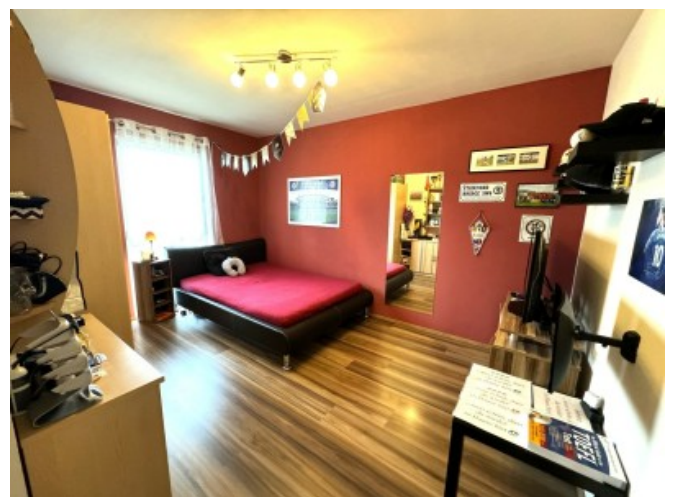
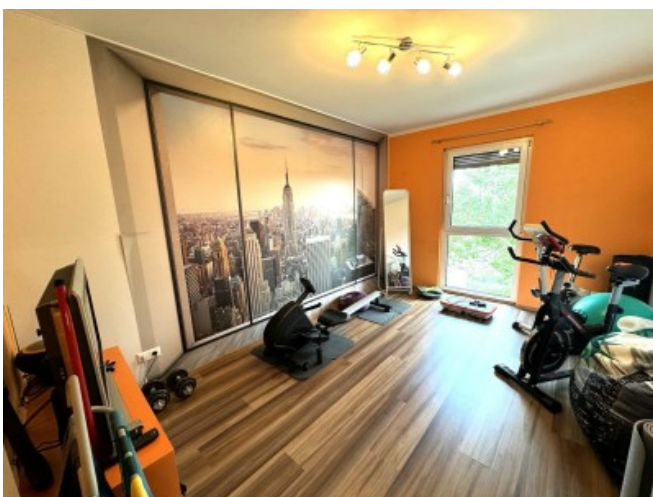
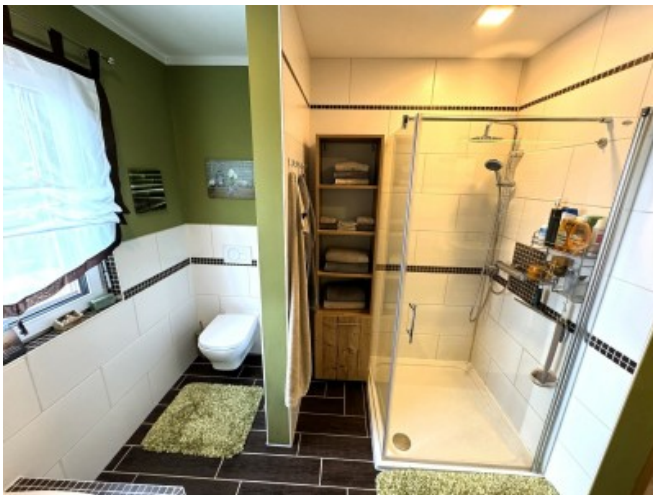
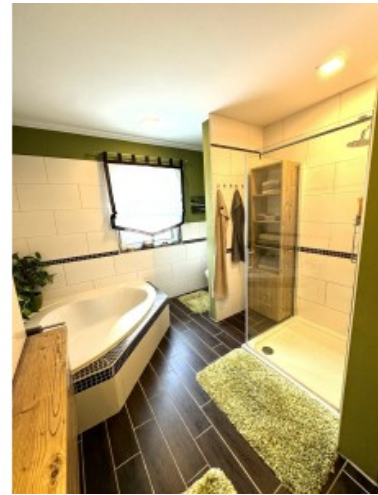


GALLERY











LINKS AND DOWNLOADS

[More information](#)

[Erdgeschoß_001](#)

[Obergeschoß](#)

[EAW_2542 Kottingbrunn, Ziegelofengasse 7_20240712](#)

