



#0004003869

## Modernes Büro in Neußerling

4175 Neußerling



Rent: 1.025,56 €  
Usage Area: 78,00 m<sup>2</sup>  
Rooms: 2

### YOUR CUSTODIAN



Elisabeth Klaming  
Teamassistentz - Immobilienmakler  
Real-Treuhand Immobilien  
klaming@rbgr.at  
+43 7239 8123 32637





## DESCRIPTION

Modernes Büro mitten in Neußerling mit einer Nutzfläche von ca. 78 m<sup>2</sup>. Vollausgestattet mit einer hochwertigen Möblierung, Küche und einem modernen Sanitärbereich. Klimaanlage, Glasfaser-Internetanbindung, EDV-Verkabelung, barrierefrei. Gute öffentliche Verkehrsanbindung nach Linz.



## FITTINGS AND PROPERTIES

### PROPERTIES


Category	Office
Usage Type	Commercial
Sales Type	Rent
Year of construction	2009
Heating	District Heating: Oil

### AREAS

Usage Area ca. 78 sqm

### ENERGY CERTIFICATE

*Available*

HWB-Value (KWh/m <sup>2</sup> /a)	58,00
HWB Class	 C

### SEGMENTATION

Total Rooms	2
Toilets	1

### FEATURES

Special configuration	Accessible, Air Condition	Exploitation	Development with Water, Development with electricity
-----------------------	---------------------------	--------------	--



## PRICES AND FINANCIAL INFORMATION

### BASE PRICES

Net Rent	748,80 € incl. 20% VAT
Net Rent Sum	748,80 € incl. VAT

### RUNNING COSTS

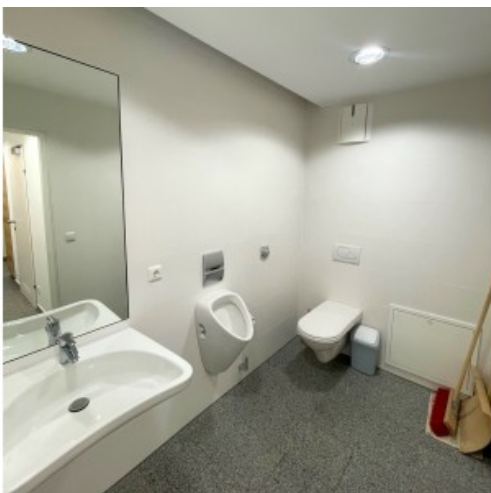
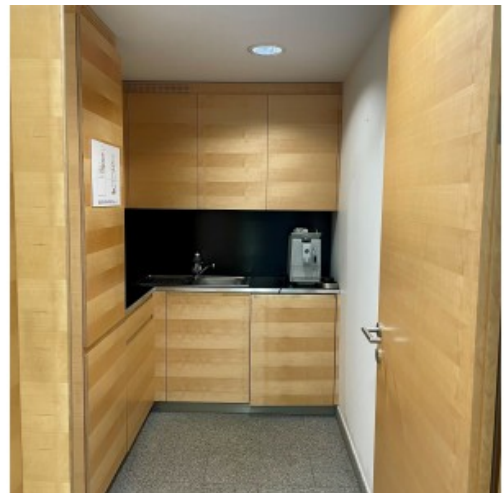
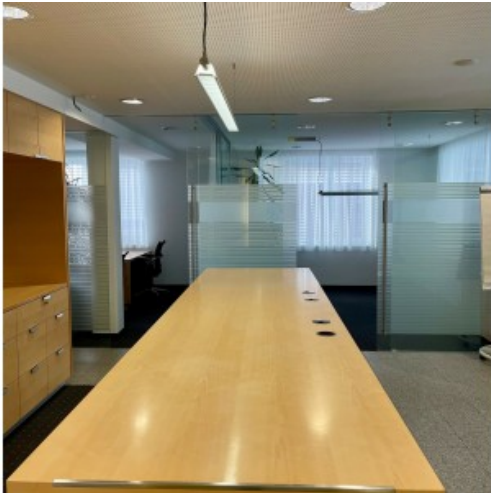
Running costs	276,76 € incl. 20% VAT
---------------	------------------------

### TOTAL

Total Rent	1.025,56 € incl. VAT
------------	----------------------



GALLERY





LINKS AND DOWNLOADS

[More information](#)

[P119 Raiba\\_Neusserling](#)

[Energieausweis Bankstelle EG](#)

