



#0001009060

## Wohnen am See- 25 Min nach Wien- keine Pacht- Wohnrecht mit Leibrente für Eigentümer

2325 Himberg



Purchase price: 220.000,00 €

Living Area: 43,00 m<sup>2</sup>

Rooms: 1



YOUR CUSTODIAN



Mag. Alexander Kreci

Immobilientreuhänder (Makler)

Raiffeisen Immobilien Vermittlung

alexander.kreci@riv.at

+43 664 60 517 517 62





## DESCRIPTION

Zukünftig Wohnen am See in Wiennähe!

Sichern Sie sich dieses traumhafte Seegrundstück mit einem modernen Haus in Wiennähe zum absoluten Bestpreis! Der derzeitige Eigentümer ( 85 Jahre) nutzt es bis zu seinem Ableben- lebenslanges Wohnrecht!

Danach können Sie die Immobilie als Ferien- oder Hauptwohnsitz nutzen und die Sommer direkt am See mit eigenem Steg nutzen.





## FITTINGS AND PROPERTIES

### PROPERTIES

Category	Bungalow
Usage Type	Living
Sales Type	Buy
Form of ownership	Joint ownership & provision for use
Year of construction	1994
Construction status	Finished
Heating	Ofen: Pellets, Self- Contained Central Heating: Electric
Car Spaces	2 x Open

### ENERGY CERTIFICATE

#### *Available*

Energy Certificate Date	06.08.2024
Valid until	05.08.2034
HWB-Value (KWh/m <sup>2</sup> /a)	126,00
HWB Class	 D
fGEE Value	2,75
fGEE Class	 E

### SEGMENTATION

Total Rooms	1
-------------	---



**Maklerservice & Bewertung**

Bathrooms	1	<b>AREAS</b>	
Toilets	1	Living Area	ca. 43 sqm
Bedrooms	1	Usage Area	ca. 55 sqm
Terraces	1	Total Area	ca. 200 sqm
		Terrace Area	ca. 12 sqm
		Garden Area	ca. 100 sqm

**FEATURES**

Location	South-East	View	Lakeview
Area	Near water	Additional rooms and areas	Storeroom, Wintergarden
Special configuration	Air Condition, Accessible, Chimney, Alarm Equipment, Roller Shutter	Condition	Good condition
Age	New Building	Exploitation	Common developed
Connections	Cable Duct, SAT, Internet Connection	Floor	Flagstone
Construction	Massive Construction, Flat Roof	Furnished	Fully furnished
Cellar	No cellar	Sanitation	Show
Kitchen	Kitchenette		



## PRICES AND FINANCIAL INFORMATION

### BASE PRICES

Unit Buy Price	220.000,00 € incl. VAT
----------------	------------------------

### TOTAL

Total buy price	220.000,00 € incl. VAT
-----------------	------------------------

Commission Buy	3% plus 20% VAT
----------------	-----------------

### SIDECOSTS

Costs for contract	1%
--------------------	----

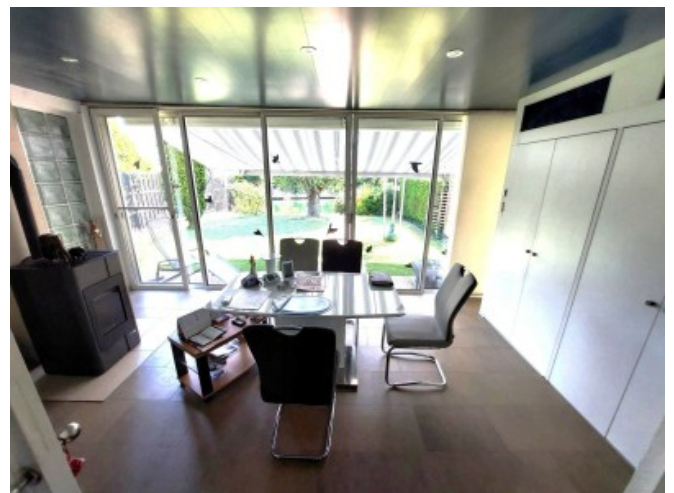
Purchase tax percent	3,5%
----------------------	------

Land register entry percent	1,1%
-----------------------------	------





GALLERY







LINKS AND DOWNLOADS

[More information](#)

[20240719\\_125516](#)

