



#0004004832

Wohnhaus mit 5 Wohneinheiten in Reiterndorf

4820 Bad Ischl



Purchase price: 550.000,00 €

Living Area: 260,00 m²

YOUR CUSTODIAN



Ingrid Nutz

Immobilientreuhänderin (Makler,
Bauträger)

Real-Treuhand Immobilien

nutz@raiffeisen-immobilien.at

+43 676 8141 9319





DESCRIPTION

.





FITTINGS AND PROPERTIES

PROPERTIES



| | |
|------------|----------------------|
| Category | Apartment House |
| Usage Type | Living |
| Sales Type | Buy |
| Heating | Central Heating: Gas |

AREAS

| | |
|-------------|-------------|
| Living Area | ca. 260 sqm |
| Garden Area | ca. 640 sqm |

ENERGY CERTIFICATE

Available

| | |
|-----------------------------------|---|
| HWB-Value (KWh/m ² /a) | 220,00 |
| HWB Class |  F |
| fGEE Value | 2,40 |
| fGEE Class |  D |

SEGMENTATION

| | |
|-----------|---|
| Bathrooms | 5 |
|-----------|---|



PRICES AND FINANCIAL INFORMATION

BASE PRICES

| | |
|----------------|--------------|
| Unit Buy Price | 550.000,00 € |
|----------------|--------------|

TOTAL

| | |
|-----------------|--------------|
| Total buy price | 550.000,00 € |
|-----------------|--------------|

| | |
|----------------|-----------------|
| Commission Buy | 3% plus 20% VAT |
|----------------|-----------------|

SIDECOSTS

| | |
|--------------------|---|
| Costs for contract | Dr. Clemens Heigenhauser, 4820 Bad Ischl, Wiesingerstr. n. Anwaltstarif |
|--------------------|---|

| | |
|----------------------|------|
| Purchase tax percent | 1,1% |
|----------------------|------|

| | |
|-----------------------------|------|
| Land register entry percent | 3,5% |
|-----------------------------|------|



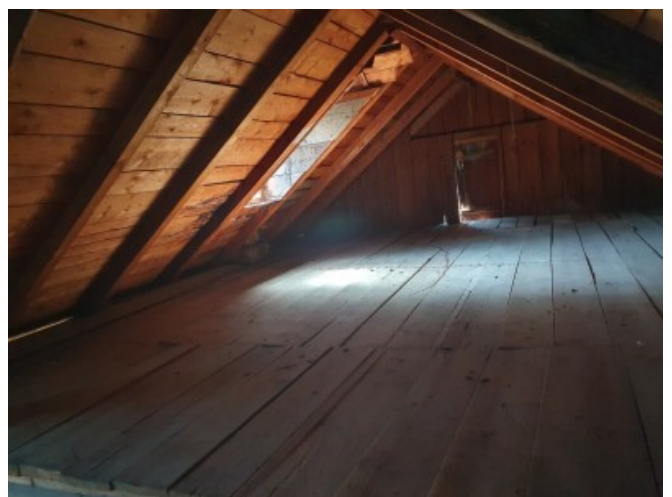
INFRASTRUCTURE AND SURROUNDING

Im Ortsteil Reiterndorf verkehrsgünstig nahe Bushaltestellen und Schulen gelegen. Gute Einkaufsmöglichkeit (Spar Markt, Bäcker) in unmittelbarer, fußläufiger Nähe.



GALLERY







LINKS AND DOWNLOADS

[More information](#)

